



NORTHERN VERTEX

MINING CORP

NORTHERN VERTEX DRILLS FURTHER WIDESPREAD MINERALIZED INTERCEPTS ALONG THE RUTH VEIN, PARALLEL TO MOSS MINE OPEN PIT

Highlights:

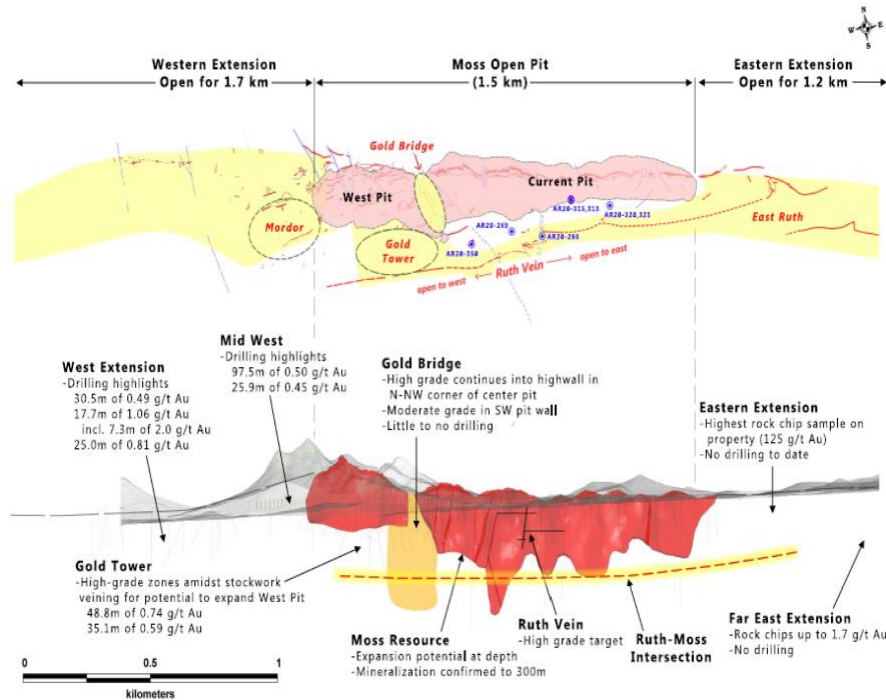
- 15.25 meters @ 3.35 g/t gold and 23.09 g/t silver within 33.55 meters @ 1.83 g/t gold and 13.49 g/t silver in hole AR20-350R
- 1.5 meters @ 8.74 g/t gold and 80.10 g/t silver in hole AR20-322R, which is 183 meters east of AR20-350R
- 3.0 meters @ 3.82 g/t gold and 56.0 g/t silver in hole AR20-321R, which is 457 meters east of AR20-350R
- Results are from the Ruth vein, 160 meters south of, and parallel to, Moss Mine open pit

December 10, 2020, Vancouver, B.C. - Northern Vertex Mining Corp. (TSX.V: NEE) (OTC Nasdaq Intl.: NHVCF) (the "Company" or "Northern Vertex") is pleased to announce recent drill results from its multi-phase drilling and resource expansion program (the "Program") at the Moss Mine in NW Arizona. The most notable results are set out above and are taken from 37 new reverse circulation(RC) drill holes from the Ruth vein area, which hosts multiple high-grade zones within larger zones of typical Moss Mine bulk-tonnage grade mineralization along the Ruth vein. Three rigs (1 core and two RC) are currently operating within the Company's Phase II of a multi-phase drill program and the program will transition to target the intersection between the Ruth vein and the Moss vein in the coming months.

Ken Berry, President & CEO stated: *"We are pleased to report another round of drilling results, including new high-grade intercepts along with thick low-grade zones, from our resource expansion drill program at the Moss Mine. Drilling at the Ruth Vein, which runs parallel to our Moss Open Pit, continues to encounter encouraging drill intercepts. The Ruth is located just 160 meters off the southern edge of our open pit mine and dips north toward the Moss Vein, which dips to the south, with the two veins intersecting at a contact zone approximately 225 meters below surface. This Ruth/Moss Contact Zone is a prime geological drill target for our ongoing resource expansion program at the Moss Mine."*

Ruth Vein Highlights

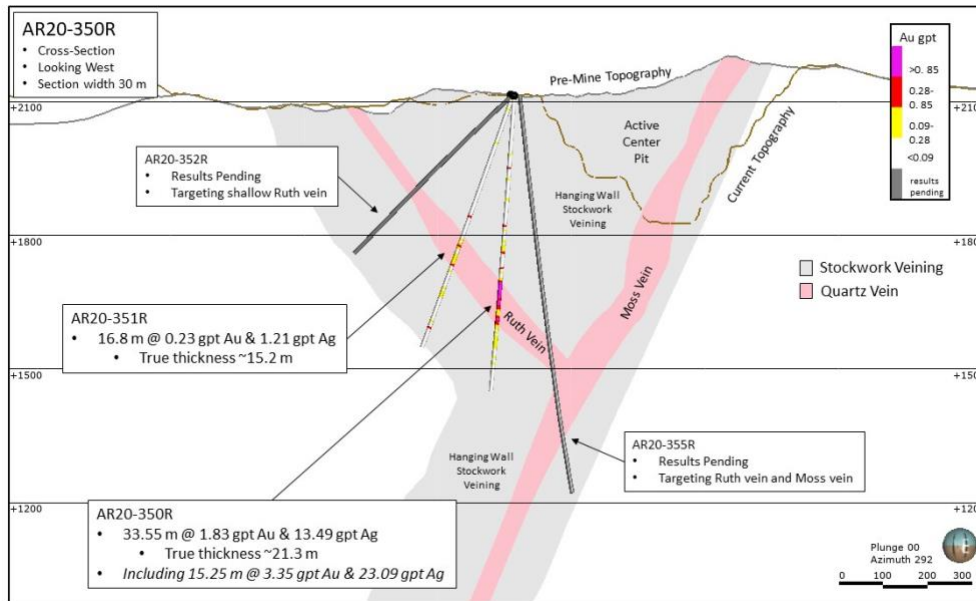
Definition drilling along the Ruth vein shows a strike length of greater than 500 meters with multiple high-grade zones intersected. Click the link to view a plan map showing drill-hole locations at the Ruth Vein ([figure 1](#)).



The latest intercept comes from hole AR20-350R, which was drilled within 15 meters of the active Center pit crest and returned 15.25 meters @ 3.35 gpt gold and 23.09 gpt silver, within 33.55 meters @ 1.83 gpt gold and 13.49 gpt silver (true thickness approximately 21.3 meters). Also, drill holes AR20-322R (183 meters east of AR20-350R) and AR20-321R (457 meters east of AR20-350R) intercepted zones of high-grade gold and silver including:

- AR20-322R: **1.5 meters @ 8.74 gpt gold and 80.10 gpt silver** within 29.0 meters @ 0.75 gpt gold and 7.15 gpt silver (true thickness approximately 18.3 meters)
- AR20-321R: **3.0 meters @ 3.82 gpt gold and 56.0 gpt silver** within 10.68 meters @ 1.369 gpt gold and 20.81 gpt silver (true thickness approximately 7.6 meters)

AR20-350R specifically targeted the Ruth vein, while hole AR20-355R, drilled from the same platform, targeted the intersection between the Ruth and Moss veins. Click the link to view a cross section of hole AR20-350R ([figure 2](#)).



Samples from hole AR20-355R are in preparation at Skyline Laboratories and assay results are pending. During this drill program, high-grade (>3.0 gpt gold) zones have been intersected in 14 different drills holes along the 500 meters of defined Ruth vein strike length, confirming that the Ruth vein hosts multiple high-grade zones.

The drilling program continues with two reverse circulation drill rigs and one core drill rig in-filling along the Ruth vein. In the coming months, mining will transition from the Center pit to the West and East pits.

Ruth Vein Detailed Drill Results

Hole ID	Azimuth	Dip	From (m)	To (m)	From (ft)	To (ft)	Length (m)	Length (ft)	Au (g/t)	Ag (g/t)
AR20-308R	180	-85	0.00	3.05	0	10	3.05	10	0.435	2.6
<i>and</i>			131.15	135.73	430	445	4.57	15	0.654	5.8
<i>and</i>			157.08	160.13	515	525	3.05	10	0.645	13.6
<i>and</i>			172.33	201.30	565	660	28.98	95	0.396	8.363
<i>and</i>			218.08	222.65	715	730	4.58	15	0.419	25.6
<i>and</i>			276.03	279.08	905	915	3.05	10	0.636	5.1
AR20-309R	195	-88	86.93	93.03	285	305	6.10	20	1.131	11.375
<i>and</i>			106.75	112.85	350	370	6.10	20	0.232	3.15
<i>and</i>			126.58	131.15	415	430	4.58	15	0.417	2.8
<i>and</i>			138.78	143.35	455	470	4.57	15	0.275	1.9
<i>and</i>			157.08	164.70	515	540	7.63	25	0.266	1.62
<i>and</i>			172.33	175.38	565	575	3.05	10	0.361	0.6
AR20-319R			No significant results							
AR20-320R			No significant results							
AR20-321R	180	-85	125.05	129.63	410	425	4.58	15	0.249	0.767
<i>and</i>			201.30	211.98	660	695	10.68	35	1.369	20.814

<i>including</i>			205.9	208.9	675	685	3.0	10	3.82	56.00
<i>and</i>			222.7	227.2	730	745	4.6	15	1.08	22.67
AR20-322R	180	-88	54.9	83.9	180	275	29.0	95	0.75	7.15
<i>including</i>			68.6	70.2	225	230	1.5	5	8.74	80.10
AR20-323R			No significant results							
AR20-324R			No significant results							
AR20-325R			No significant results							
AR20-326R			No significant results							
AR20-327R	180	-85	143.4	146.4	470	480	3.1	10	0.44	0.95
AR20-328R	180	-65	0.0	3.1	0	10	3.1	10	0.52	4.75
<i>and</i>			35.1	41.2	115	135	6.1	20	0.52	0.18
<i>and</i>			47.3	51.9	155	170	4.6	15	0.29	0.70
AR20-329R	180	-85	0.00	12.20	0	40	12.20	40	0.27	3.18
<i>and</i>			54.90	56.43	180	185	1.53	5	1.40	5.80
AR20-330R			No significant results							
AR20-331R	150	-45	16.78	25.93	55	85	9.15	30	0.23	2.13
<i>and</i>			38.13	44.23	125	145	6.10	20	0.52	12.78
AR20-332R	230	-65	10.68	15.25	35	50	4.58	15	0.81	7.43
AR20-333R	180	-85	0.0	4.6	0	15	4.6	15	1.01	10.60
<i>and</i>			18.30	30.50	60	100	12.20	40	0.31	9.04
<i>and</i>			39.65	57.95	130	190	18.30	60	0.60	2.56
<i>including</i>			39.65	48.80	130	160	9.15	30	0.94	2.08
<i>and</i>			71.68	79.30	235	260	7.63	25	0.26	1.94
<i>and</i>			97.60	102.18	320	335	4.58	15	0.39	5.93
<i>and</i>			117.43	122.00	385	400	4.58	15	0.26	3.47
AR20-334R	140	-70	10.68	25.93	35	85	15.25	50	0.72	7.04
<i>including</i>			15.25	16.78	50	55	1.53	5	3.30	28.60
<i>and</i>			70.15	82.35	230	270	12.20	40	0.35	5.75
<i>and</i>			93.03	105.23	305	345	12.20	40	0.55	3.59
AR20-335R			No significant results							
AR20-336R			No significant results							
AR20-337R	180	-85	123.53	131.15	405	430	7.63	25	1.16	2.66
AR20-338R	165	-45	67.10	70.15	220	230	3.05	10	0.57	2.25
AR20-339R			No significant results							
AR20-340R	120	-80	117.43	129.63	385	425	12.20	40	0.78	5.51
AR20-341R	180	-45	0.00	10.68	0	35	10.68	35	0.29	2.97
AR20-342R			No significant results							
AR20-343R			No significant results							
AR20-344R			No significant results							
AR20-345R	250	-70	42.70	45.75	140	150	3.05	10	0.42	0.65
AR20-346R			No significant results							

AR20-347R	180	-88	51.85	74.73	170	245	22.88	75	0.24	3.39
including			56.43	57.95	185	190	1.53	5	1.00	5.10
AR20-348R	0	-45	6.10	24.40	20	80	18.30	60	0.41	2.26
			35.08	42.70	115	140	7.63	25	0.40	2.60
			59.48	65.58	195	215	6.10	20	0.26	8.25
			184.53	201.30	605	660	16.78	55	0.24	0.86
<i>and</i>			218.08	231.80	715	760	13.73	45	0.44	4.66
<i>including</i>			219.60	222.65	720	730	3.05	10	1.08	15.55
AR20-349R			No significant results							
AR20-350R	205	-85	102.18	108.28	335	355	6.10	20	0.27	2.48
<i>and</i>			125.05	158.60	410	520	33.55	110	1.83	13.49
<i>including</i>			128.10	143.35	420	470	15.25	50	3.35	23.09
AR20-351R	205	-70	0.00	3.05	0	10	3.05	10	0.42	2.25
<i>and</i>			106.75	123.53	350	405	16.78	55	0.23	1.21
AR20-353R	230	-45	0.00	4.58	0	15	4.58	15	0.32	1.67
<i>and</i>			13.73	16.78	45	55	3.05	10	0.35	1.45
<i>and</i>			89.98	93.03	295	305	3.05	10	0.29	0.60
<i>and</i>			106.75	112.85	350	370	6.10	20	0.32	0.93
<i>and</i>			143.35	146.40	470	480	3.05	10	0.37	9.80
AR20-354R	10	-80	193.68	219.60	635	720	25.93	85	0.37	4.26

*** Note: estimated true widths range from 65 to 90% depending on dip of the vein and inclination of the drill-hole**

QA/QC

Samples of drill cuttings were collected by the drilling crew using a wet rotary splitter to ensure a representative sample of each five-foot interval. Field notes were recorded for each sample documenting what was sampled and how the sample was taken. Samples were collected in bags with a sample tag inserted and delivered to a secure on-site location prior to pick-up by Skyline Labs, a commercial laboratory in Tucson, Arizona. Skyline Labs is an ISO 9001:2008 qualified assay lab that uses and makes available internal assaying controls. Quality control consisted of one certified gold standard, one blank, and one duplicate sample inserted into every twenty samples submitted to Skyline Laboratories.

At the lab, rock samples are dried, crushed and pulverized to 85% passing through a 200-mesh sieve. The pulps are assayed for gold using a 30 g split, Fire Assay (FA) and Atomic Absorption (AA) finish. Over limit assays for both gold and silver (10 gpt for gold and 100 gpt for silver) were rerun using a gravimetric procedure. Rejects and pulps are stored at Golden Vertex's warehouse in Bullhead City for future reference.

Qualified Person

The foregoing technical information contained in this news release has also been reviewed and verified by Mr. Joseph Bardswich, P.Eng., a director of the Company and a Qualified Person ("QP") for the purpose of National Instrument 43-101 (Disclosure Standards for Mineral Projects).

Neither TSX Venture Exchange nor its Regulation Services Provider (as that term is defined in the policies of the TSX Venture Exchange) accepts responsibility for the adequacy or accuracy of this release.

About Northern Vertex Mining Corp.

Northern Vertex Mining Corp. is focused on low cost gold and silver production at its 100% owned Moss Mine in NW Arizona. The Company has experience across all areas of operations, mine development, exploration, acquisitions, and financing of mining projects. With operations at the flagship Moss Mine achieving commercial production the Company intends to consolidate additional producing or near-term production gold assets within the Western US. Through mergers and acquisitions Northern Vertex's corporate goal is to become a mid-tier gold producer.

ON BEHALF OF THE BOARD OF NORTHERN VERTEX

"Kenneth Berry"

President & CEO

For further information, please visit www.northernvertex.com or contact Investor Relations at: 604-601-3656 or at 1-855-633-8798

Cautionary Note Regarding Forward-Looking Statements:

This news release contains statements about our future business and planned activities. These are "forward-looking" because we have used what we know and expect today to make a statement about the future. Forward-looking statements including but are not limited to comments regarding the timing and content of upcoming work and analyses. Forward-looking statements usually include words such as scheduled, may, intend, plan, expect, anticipate, believe or other similar words. Forward-looking statements are necessarily based upon a number of factors and assumptions that, while considered reasonable by the Company as of the date of such statements, are inherently subject to significant business, economic and competitive uncertainties, and contingencies. Many factors, known and unknown, could cause actual results to be materially different from those expressed or implied by such forward-looking statements. We believe the expectations reflected in these forward-looking statements are reasonable. However, actual events and results could be substantially different because of the risks and uncertainties associated with our business or events that happen after the date of this news release. Readers are cautioned not to place undue reliance on forward-looking statements, which speak only as of the date made. As a general policy, we do not update forward-looking statements except as required by securities laws and regulations. US investors should be aware that mining terminology used for Canadian mineral project reporting purposes differs significantly from US terminology.

2020 number 24